

MAISON BIFAMILIALE

102A RUE DE KEHLEN - KEISPELT

2 UNITÉS

RDC / ETAGE 1
DUPLEX
3 CHAMBRES

ETAGE 1 / RETRAIT
DUPLEX
4 CHAMBRES

PROMOTEUR

BEST HOUSE s.a.
3 rue geespelt
L-3378 LIVANGE

ARCHITECTE

GROUPE L[®]
ARCHITECTURE, URBANISM AND MORE
304 A route de Thionville
L-5884 HOWALD

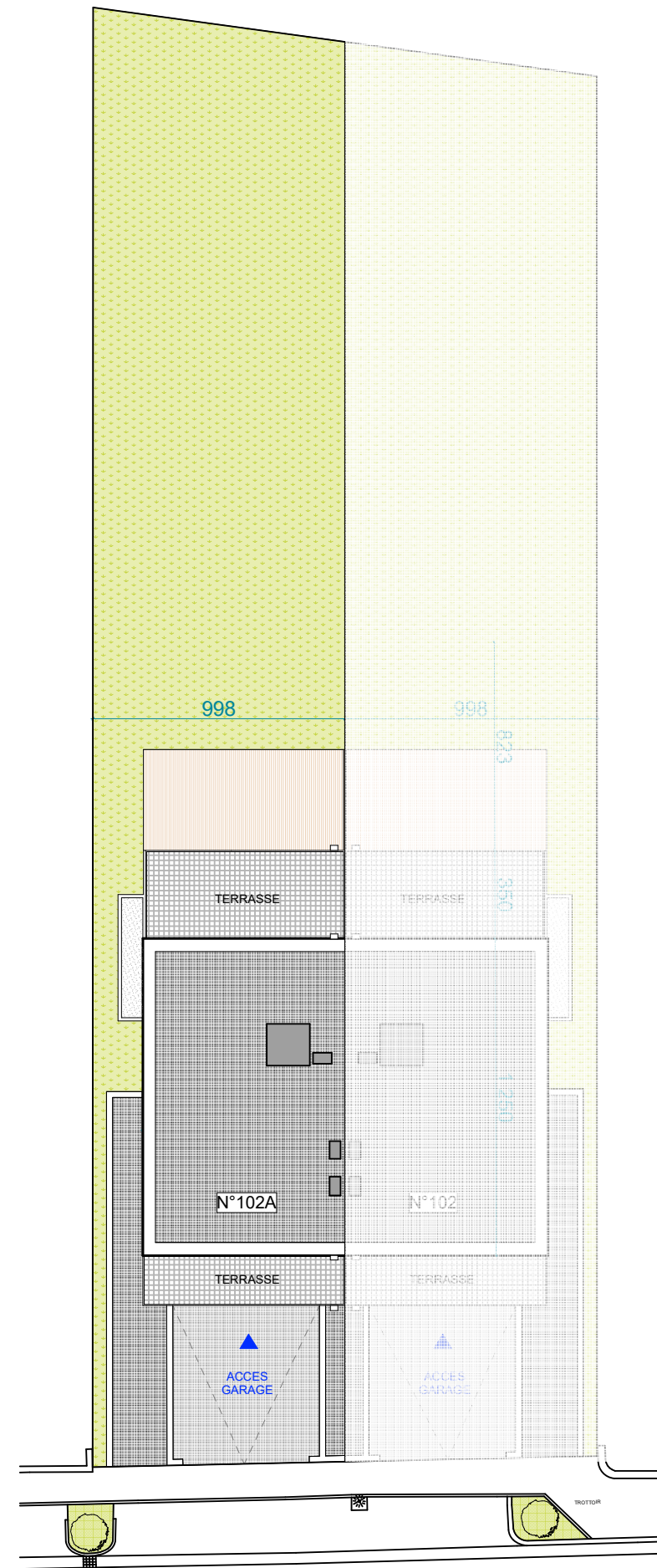
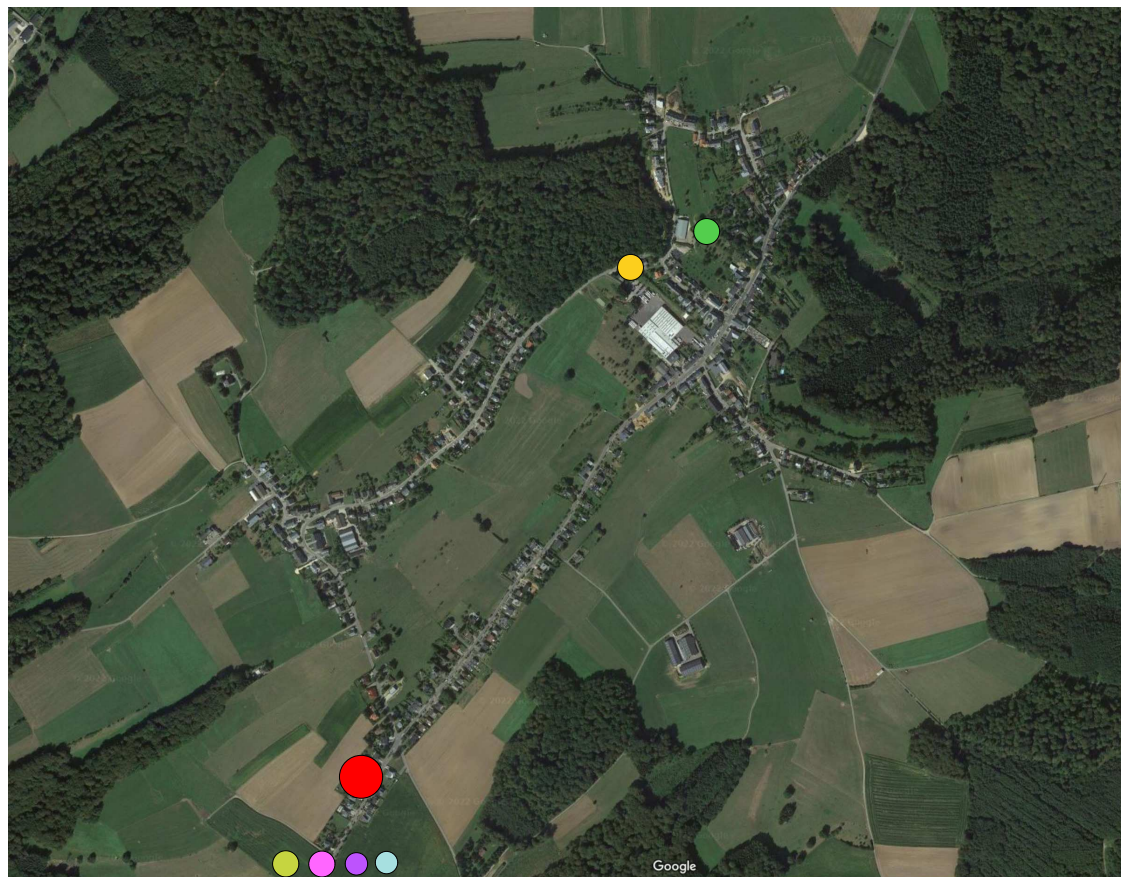
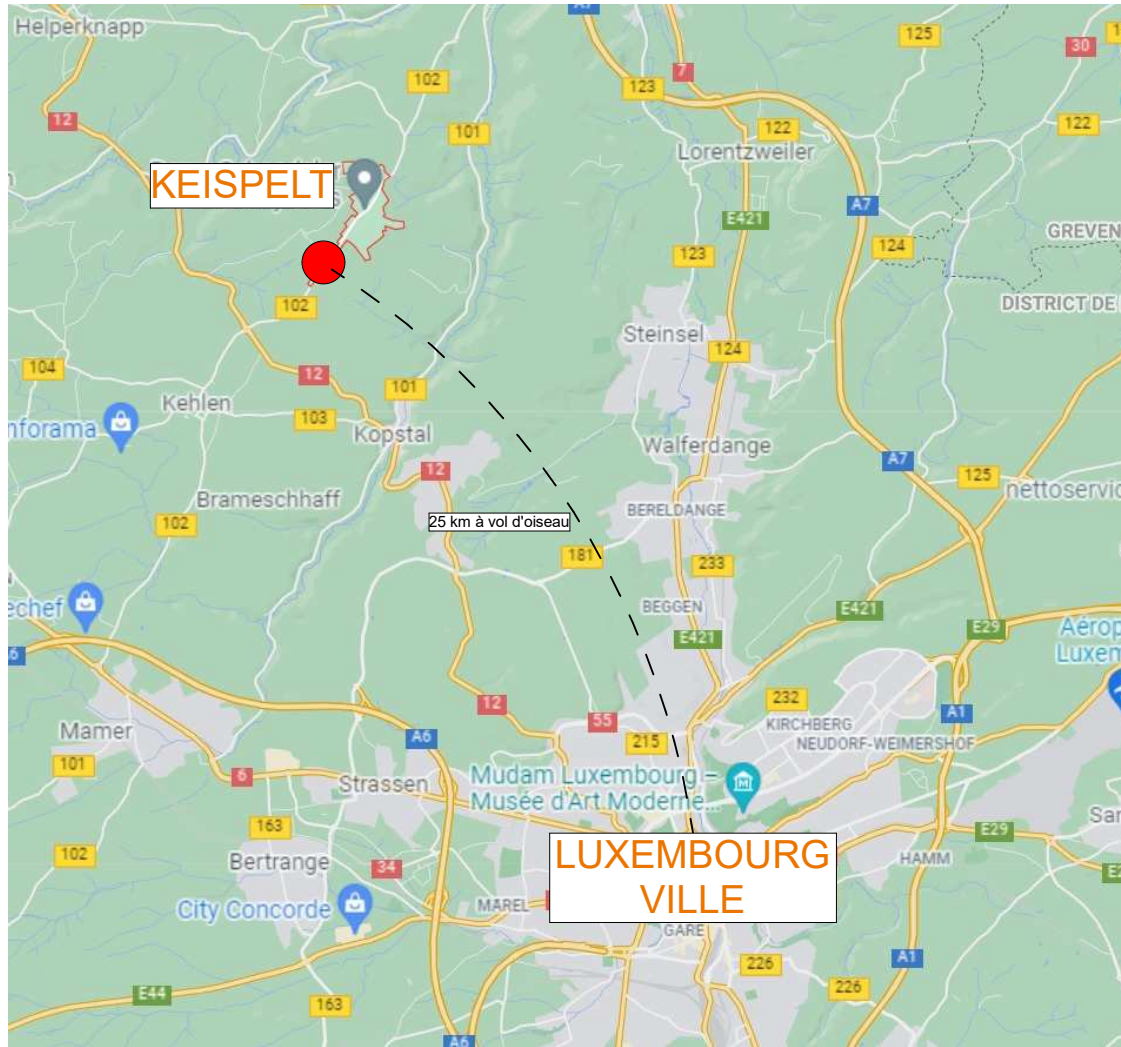


IMPLANTATION

102A RUE DE KEHLEN - KEISPELT

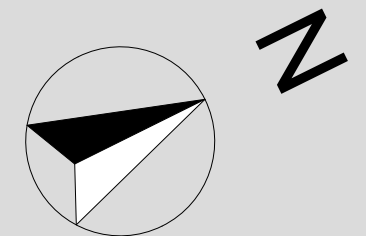
À proximité

- PARC ~ 1,6 km
- CRECHE ~ 1,3 km
- PHARMACIE ~ 2 km
- ECOLE ~ 2 km
- COMMERCE ~ 2 km
- BANQUE ~ 2 km



← vers Kehlen **Rue de Kehlen** vers Mersch →

1:250*



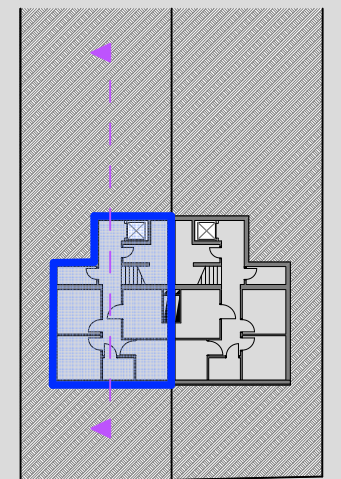
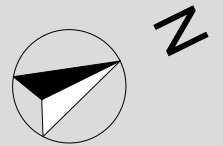
SOUS-SOL

LOCAUX PRIVES

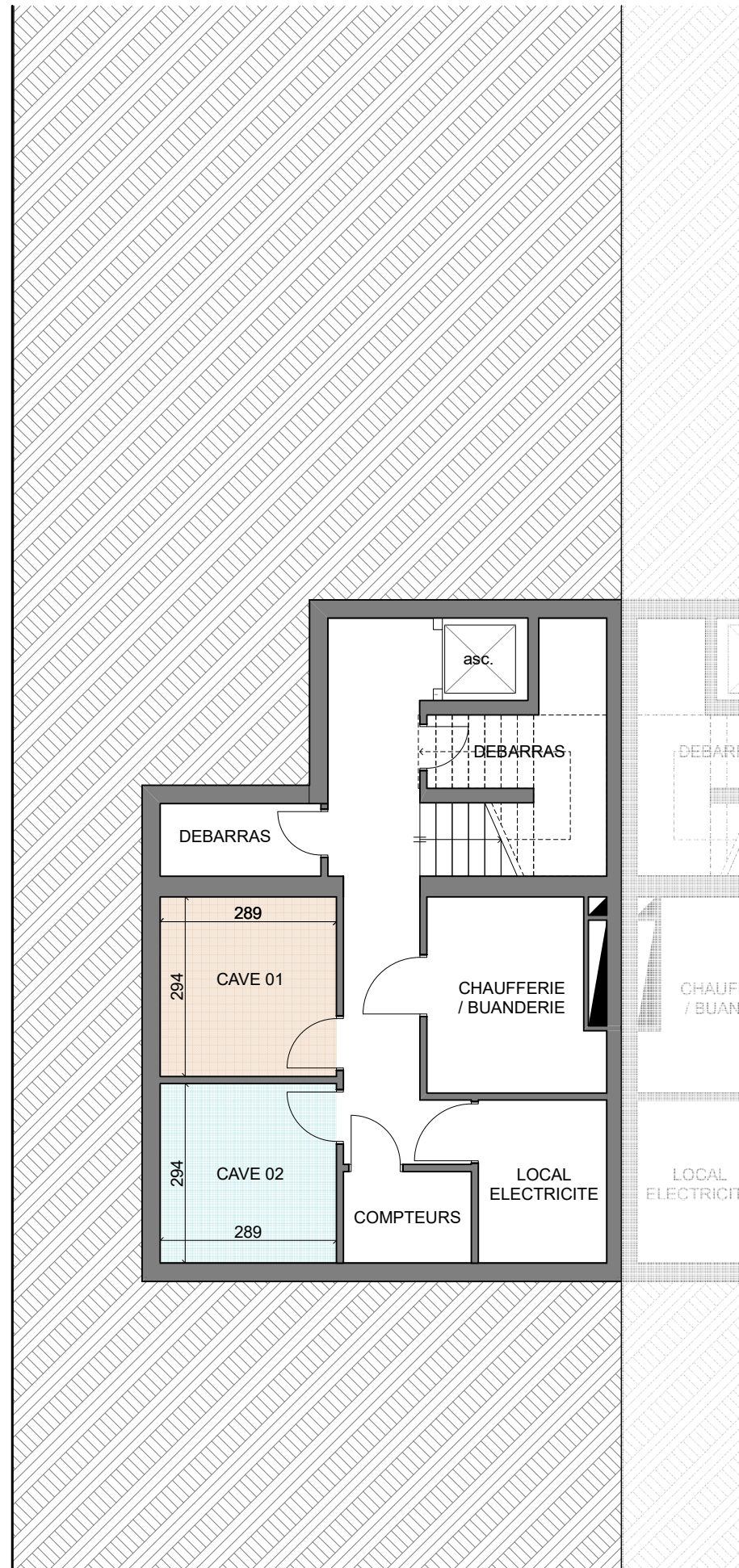
Cave 01	8,66 m ²
Cave 02	8,66 m ²

LOCAUX COMMUNS

- Débarras/ménage
- Local compteurs
- Local électricité
- Chaufferie / buanderie

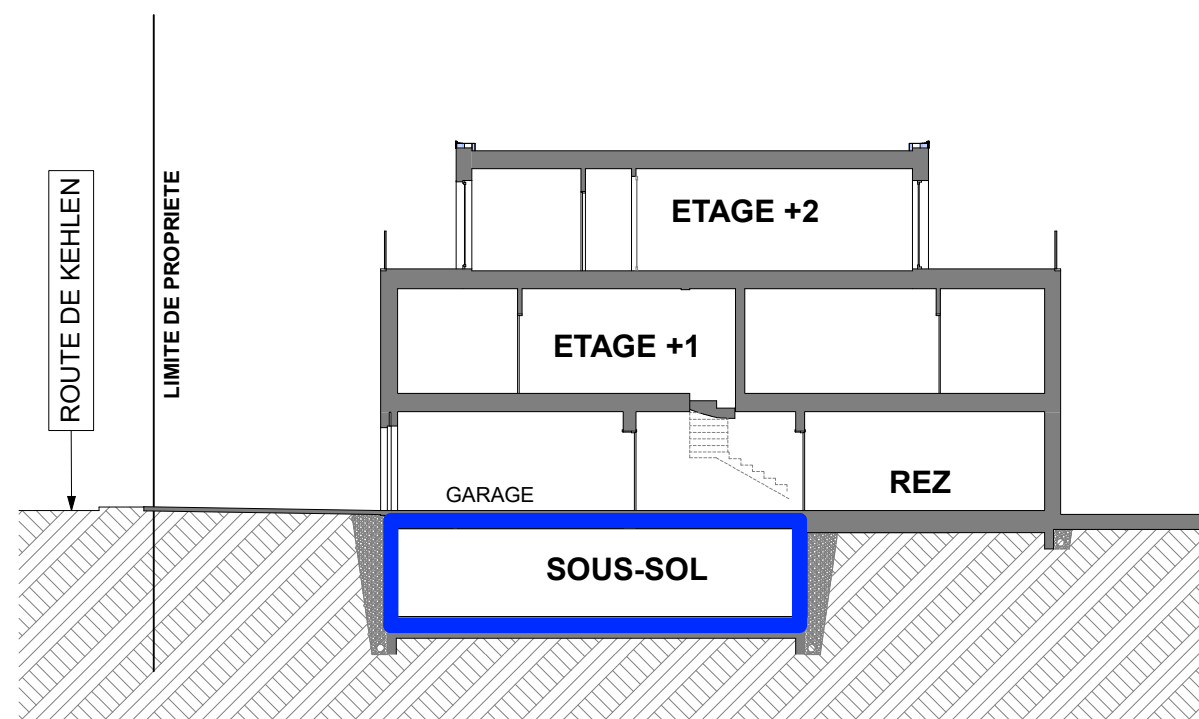


Les surfaces indiquées sont approximatives et seront vérifiées sur le cadastre vertical validé par l'Administration.



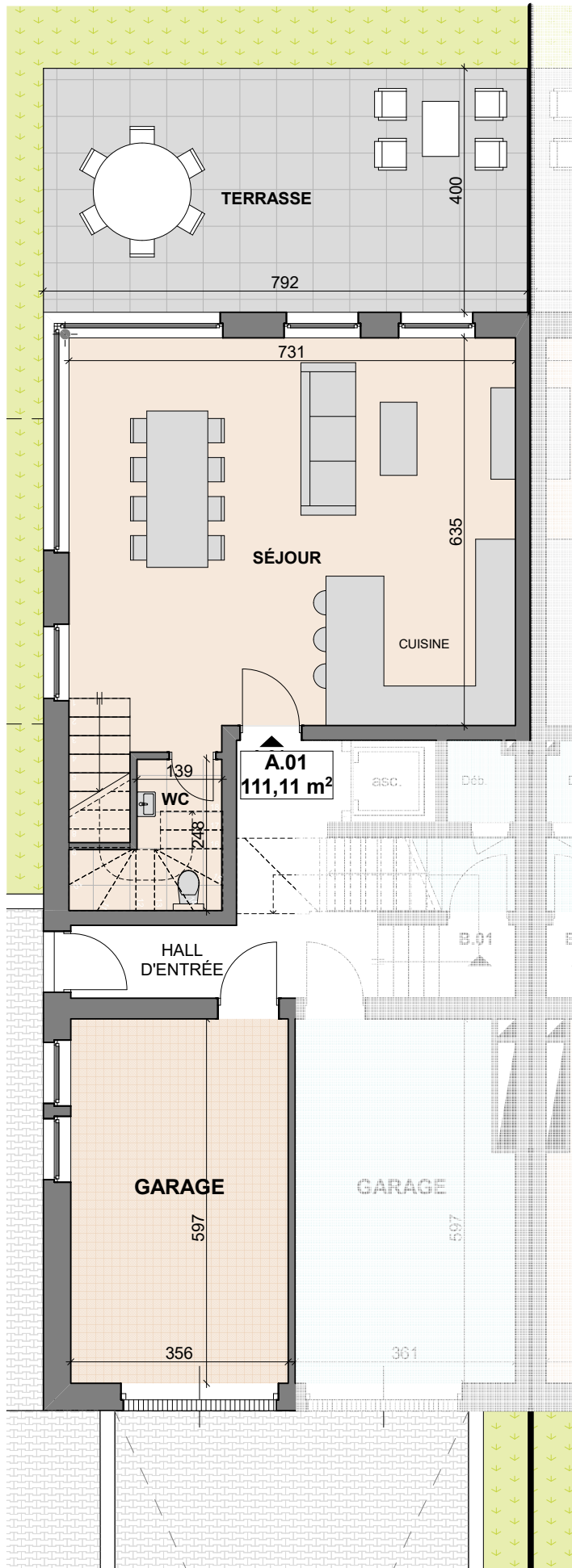
-1 SOUS-SOL

1:100*

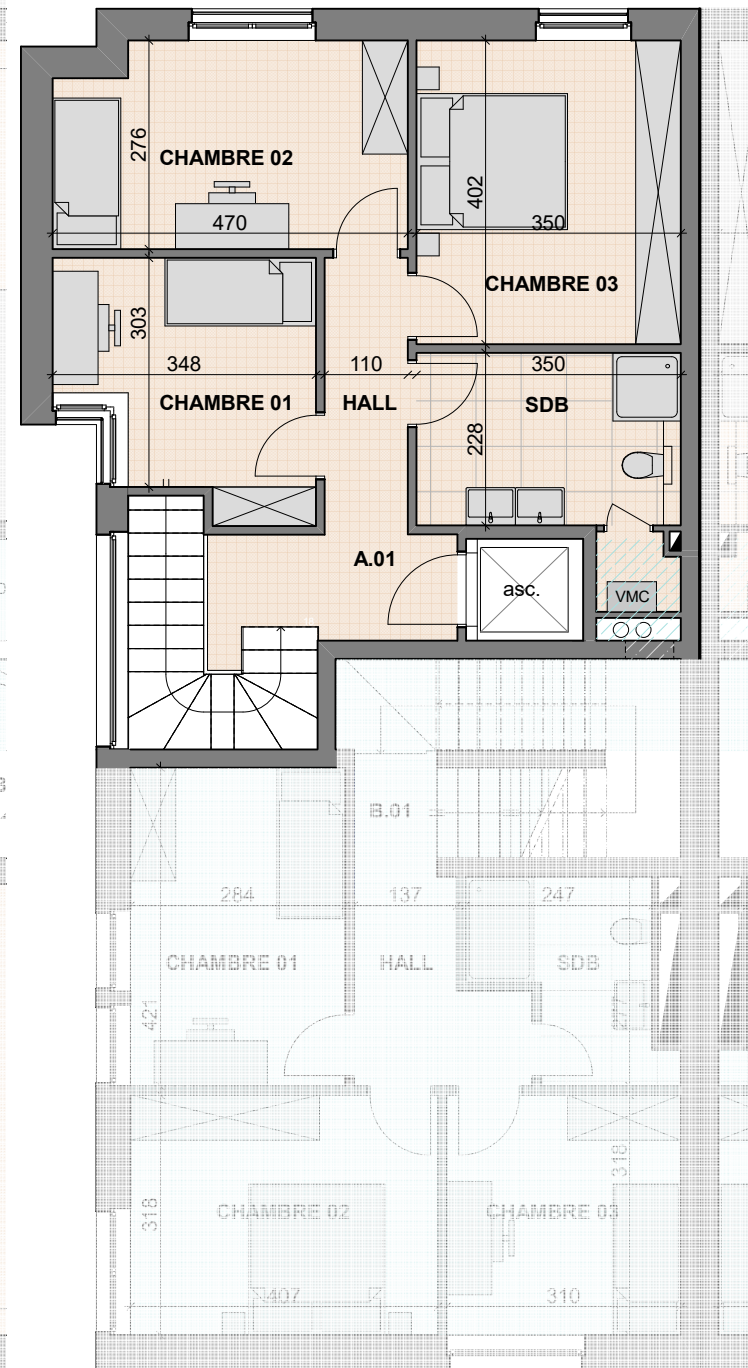


COUPE TRANSVERSALE

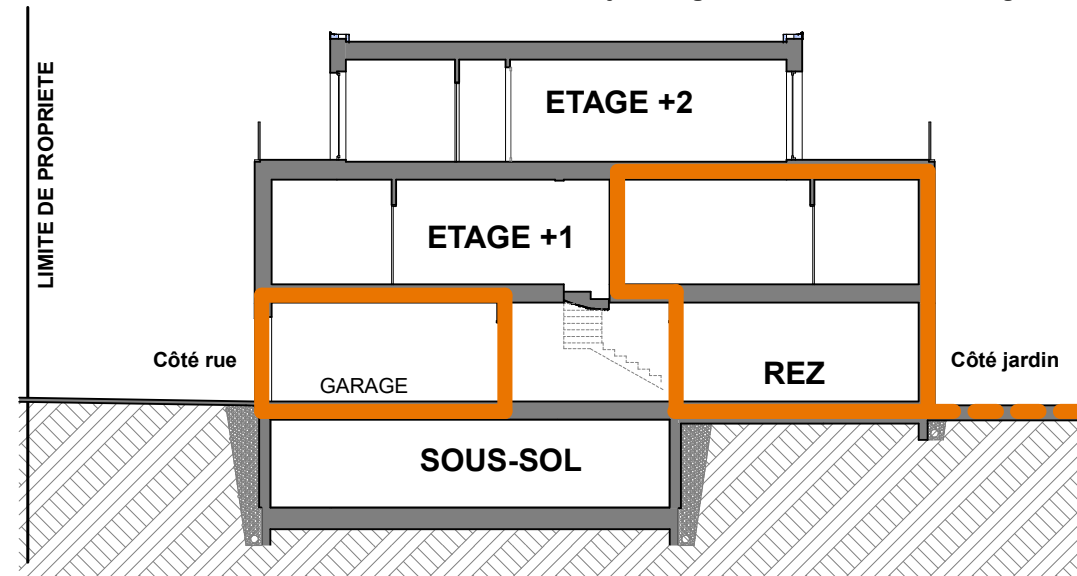
1:200*



ETAGE 01



1:100*



COUPE TRANSVERSALE

1:200*



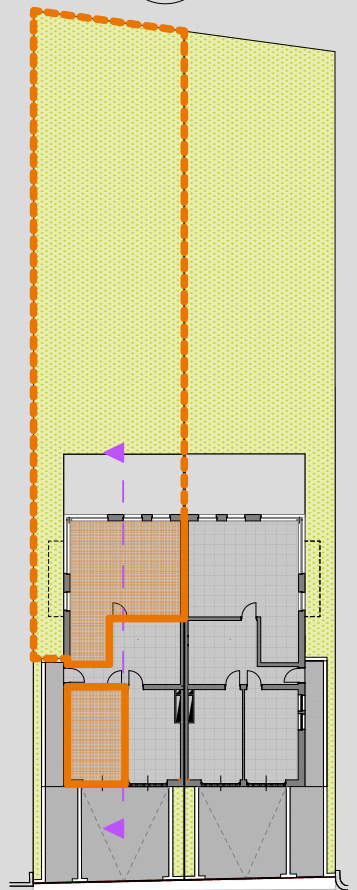
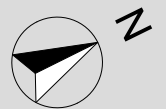
image non contractuelle



VUE DU JARDIN

image non contractuelle

APP. A.01	± 111,11m ²
partie Rez	54,07 m ²
Séjour	49,05 m ²
WC	4,56 m ²
Terrasse	31,93 m ²
Jardin	312,92 m ²
partie Etage +1	57,04 m ²
Chambre 01	10,02 m ²
Chambre 02	12,47 m ²
Chambre 03	14,06 m ²
SDB	9,18 m ²
Garage	21,61 m ²

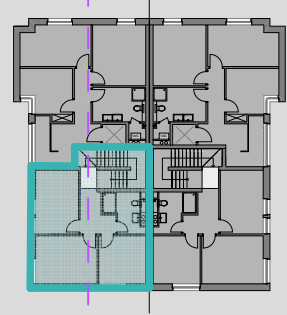
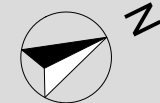
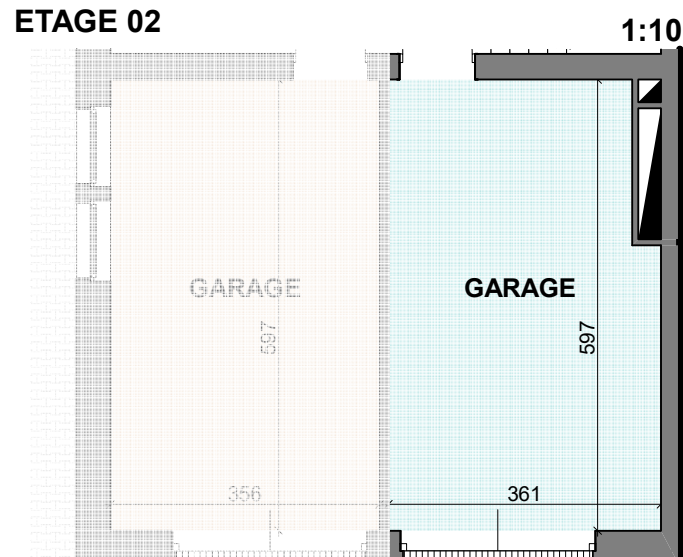
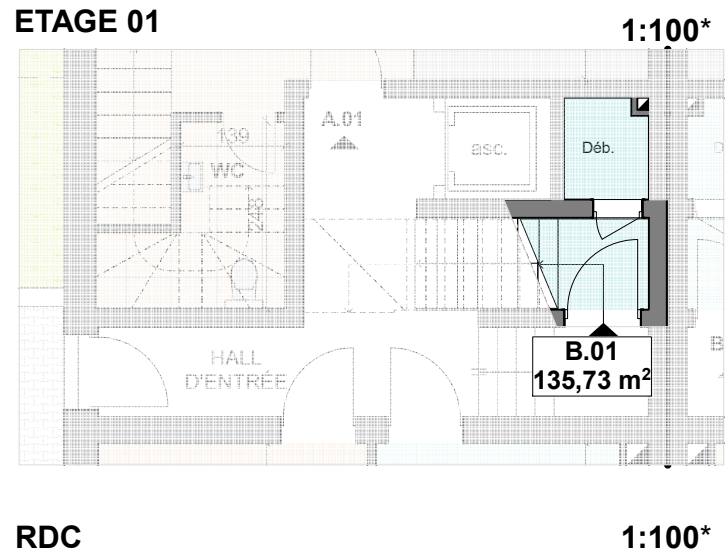
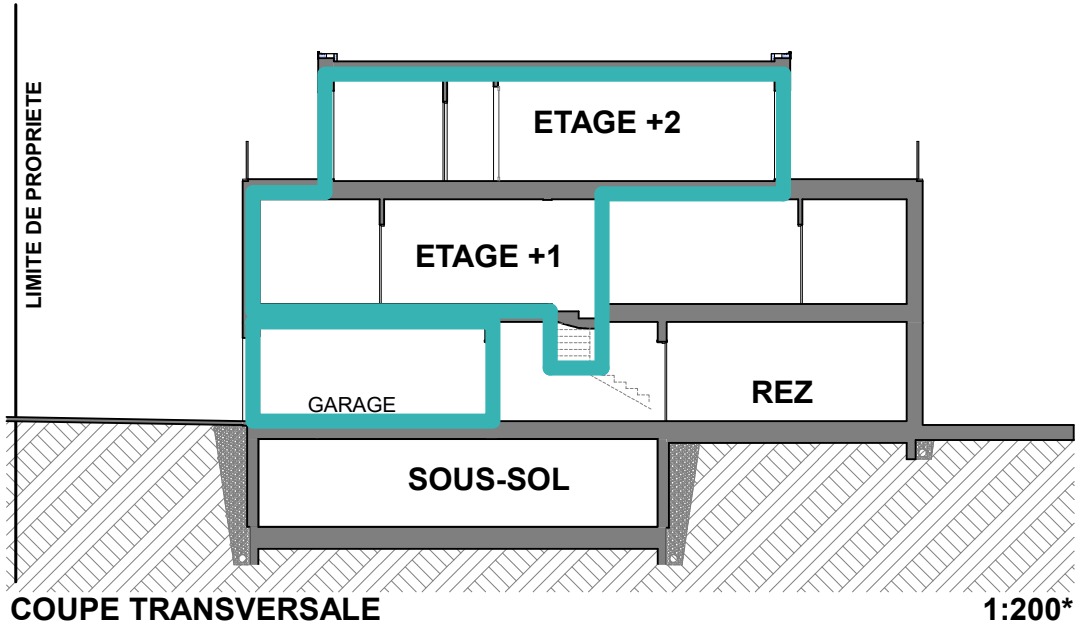
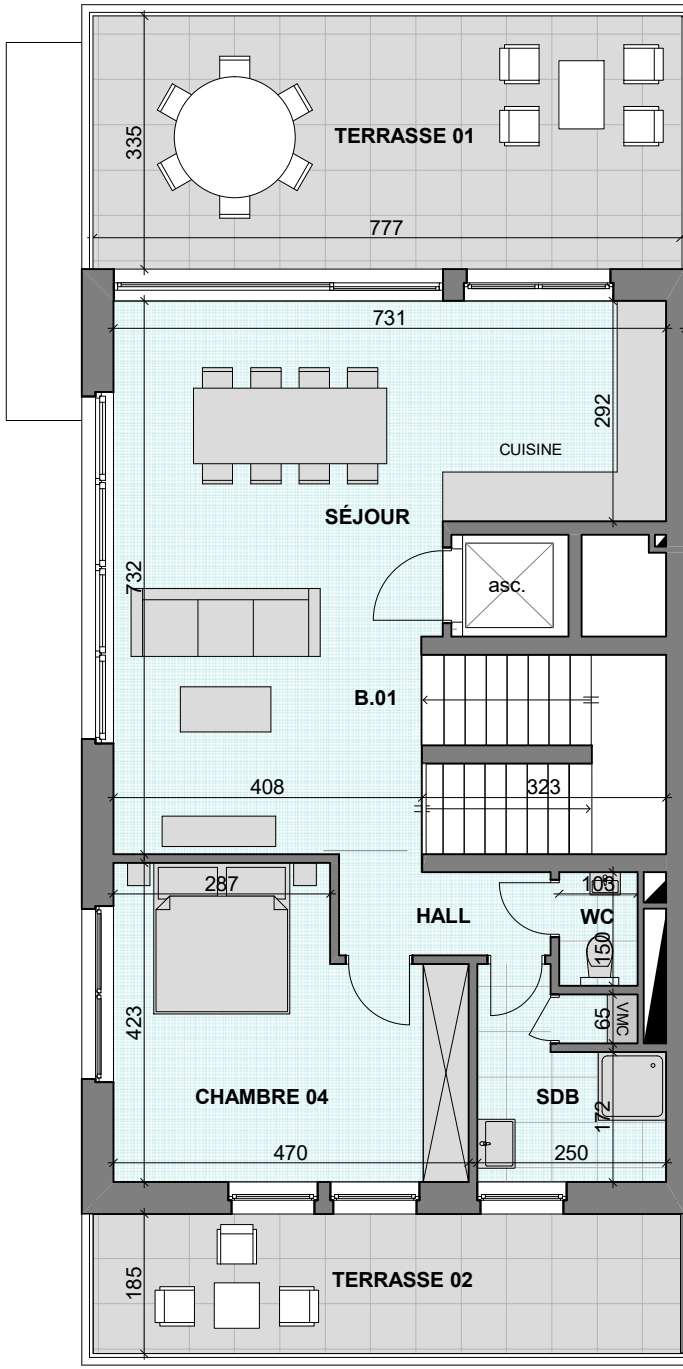
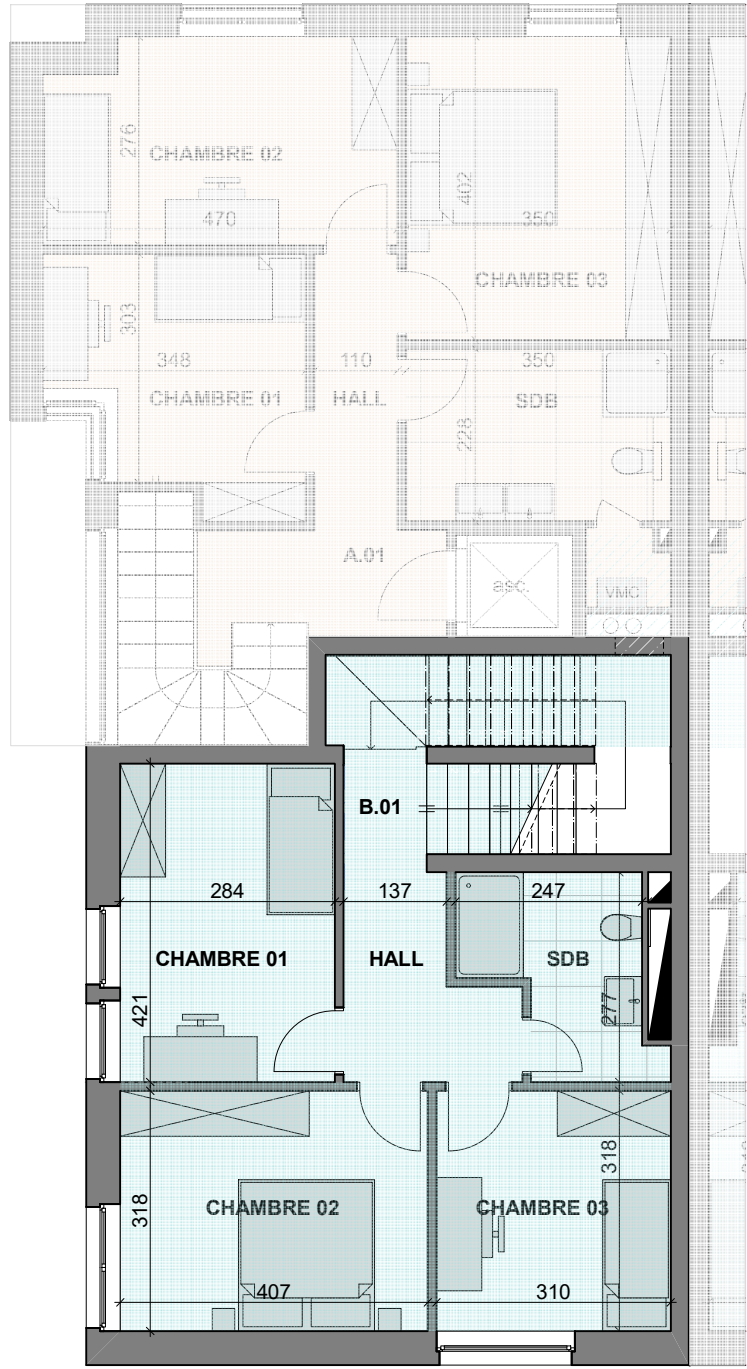


Les surfaces indiquées sont approximatives et seront vérifiées sur le cadastre vertical validé par l'Administration.

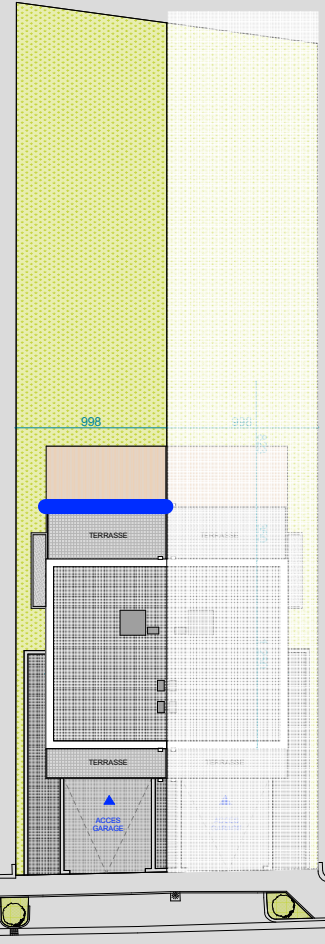
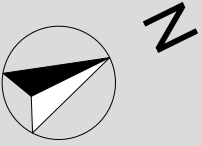
102A RUE DE KEHLEN - KEISPELT

**ETAGE 01
RETRAIT**

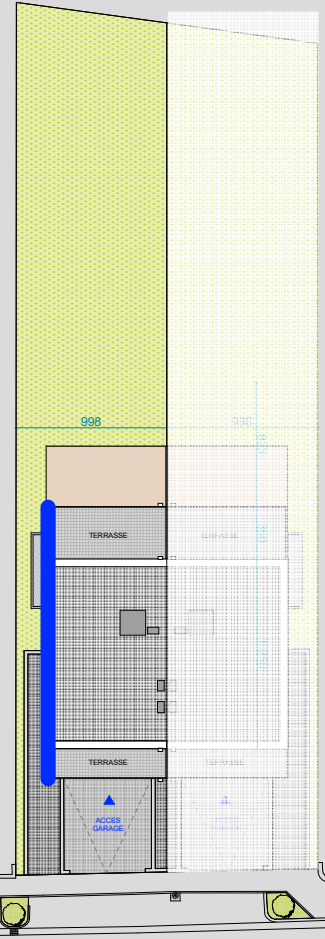
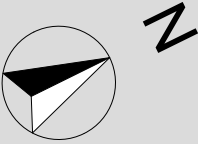
APP. B.01	± 135,73m²
rez accès/débarras	6,93 m ²
Escalier intérieur	5,48 m ²
Débarras	1,45 m ²
partie Etage +1	59,04 m²
Chambre 01	11,97 m ²
Chambre 02	12,94 m ²
Chambre 03	9,86 m ²
SDB	5,66 m ²
partie étage +2	69,76 m²
Chambre 04	17,40 m ²
Séjour	39,70 m ²
WC	1,55 m ²
SDB	5,43 m ²
Terrasse 01	26,24 m ²
Terrasse 02	14,49 m ²
Garage	21,05 m²



Les surfaces indiquées sont approximatives et seront vérifiées sur le cadastre vertical validé par l'Administration.

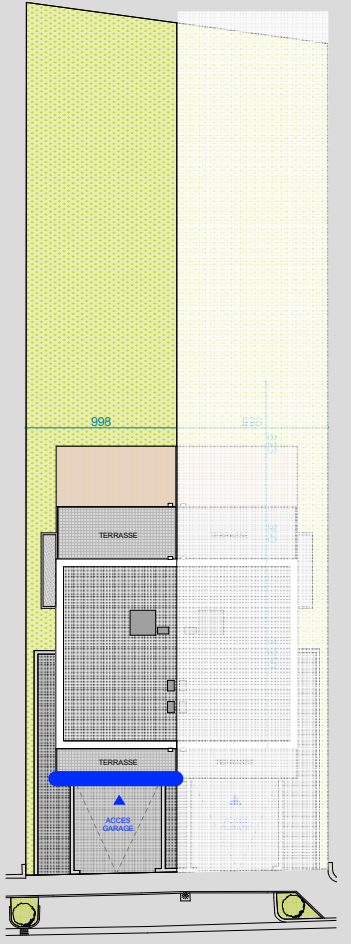
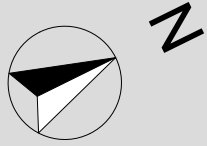
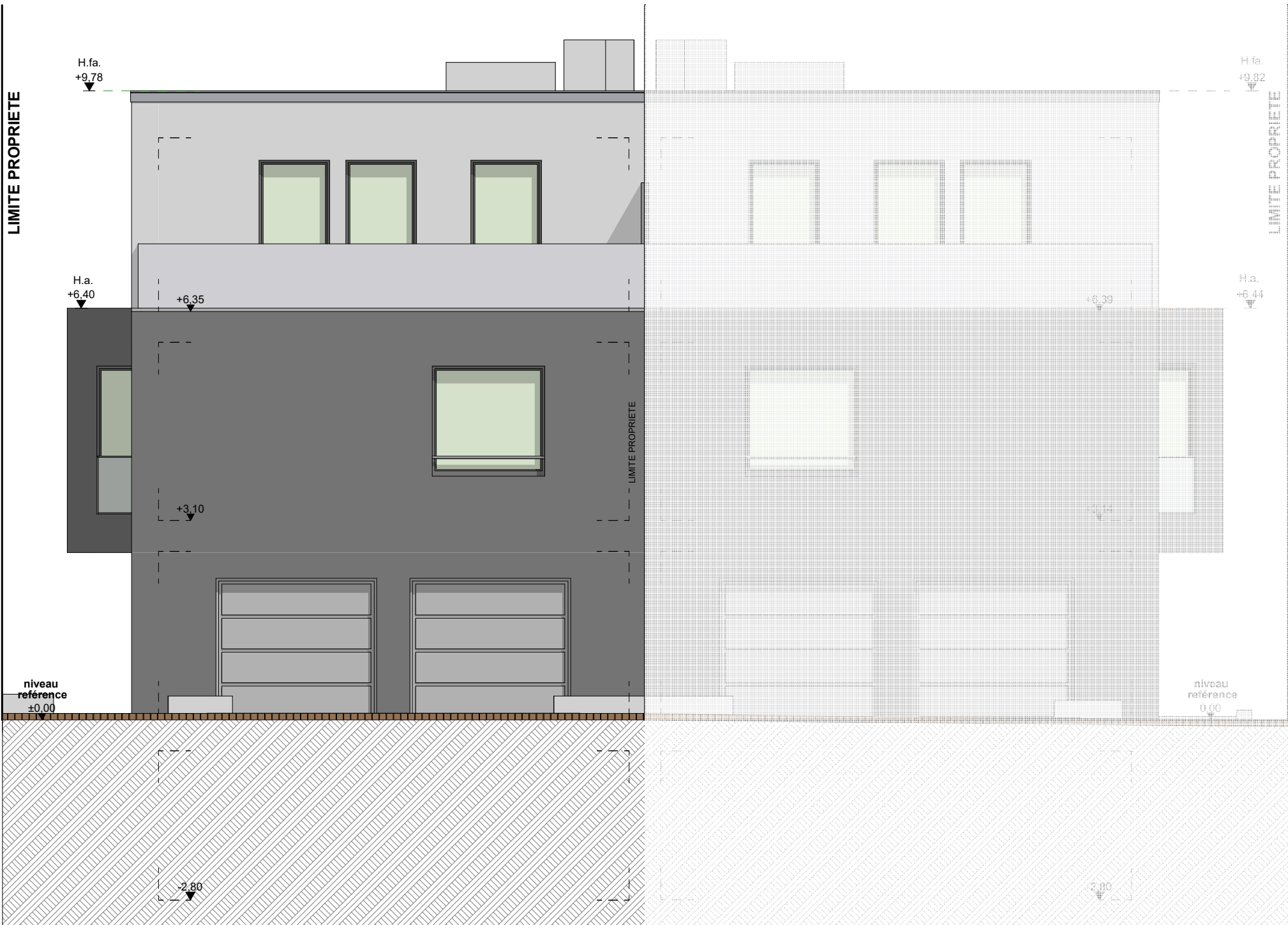


1:75*



Rue de Kehlen

1:75*



Rue de Kehlen

1:75*

MAISON BIFAMILIALE

102A RUE DE KEHLEN - KEISPELT



PROMOTEUR

BEST HOUSE s.a.
3 rue geespelt
L-3378 LIVANGE

ARCHITECTE

GROUPE L[®]
ARCHITECTURE, URBANISM AND MORE

304 A route de Thionville
L-5884 HOWALD

MADE BY